

Appendix C

Rat Tube Construction

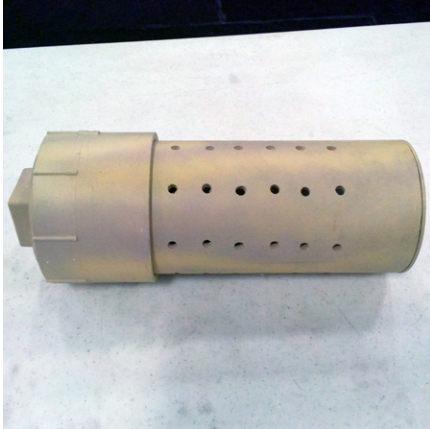
List of materials:

- (1) 10" section of schedule 40 PVC pipe, 4" diameter
- (1) 4" clean-out drain cap
- (1) 4" clean-out plug
- (1) 4" PVC snap in Drain

Drill and bit to drill 5/16" air holes in pipe

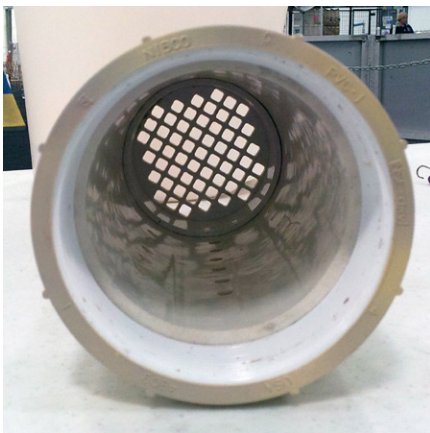
Cut a piece of the 4" diameter Sch40 pipe 10 inches long. Place the snap in drain into one end of the pipe section and the clean-out cap on the other end. There are 8 ridges on the clean-out cap which you can use as guides for drilling the air holes if you want straight lines. Just use a chalk line and line it up on the ridges and then snap the chalk line to leave a straight line on the pipe. Drill 5/16" holes about an inch apart along this line the length of the pipe leaving room at each end for the cap and plug to fit in; you should have 8 lines of holes. Screw the clean-out plug into the clean-out cap and paint as desired. Combinations of light tans, browns or mossy greens help the tubes not stand out against straw or hay so obviously.

Glueing the end pieces should not be necessary, but if you find that dogs are able to pry off either end you may need to do some glueing. Try not to glue though as it is nice to be able to take the tubes apart and wash them easily with a hose and some bleach water.



side view

clean out drain cap



interior view

snap in drain

