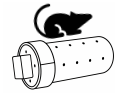


# Sniffing into Spring



## A Las Vegas Barn Hunt Trial

**LOCATION:** 1200 Ralston Dr, LAS VEGAS, NV 89106

**Feb 27 - Mar 1, 2026**

6 sanctioned trials over 3 days in Las Vegas, NV! Open to ALL Breeds and Mixed Breeds

Judge **Dan Mata** (BHAJ-013A) of Portland, Oregon will be judging all classes

Trial Chair: Jeri Muntis

702-290-8746; [jmuntis@cox.net](mailto:jmuntis@cox.net)

Trial Secretary: Jade Goh

347-687-3641; [quintessentialdog@gmail.com](mailto:quintessentialdog@gmail.com)

Trial Committee: Jen Feucht, Morgan Osborn, Kela Bush and all members of Sin City Super Sniffers present at the event.

Event #'s: BHLE-260673, BHLE-260674, BHLE-260675, BHLE-260676, BHLE-260677, BHLE-260678

*Permission has been granted by the Barn Hunt Association, LLC for the holding of these barn hunt trials under BHA Rules and Regulations.*

Follow this event at: <https://www.facebook.com/share/1FgviTegNd/>

**REGISTERING FOR THE TRIAL:** Entries will not be accepted without signatures and payment. Owners are responsible for entry errors. No refunds after February 26th, 2025. No refunds for natural disasters/Acts of God/extreme emergencies, except at the discretion of the Chair. Your reservation will be confirmed by email. **Reach out to the event secretary if you can't enter online and need a different method of entry.**

Online Entry and Payment: <https://www.secreterrier.com/events/2149/enter>

**ENTRIES:** Registration opens Monday, January 19, 2026, and closes Sunday, February 15, 2026. Late entries will be allowed; Day of Trial Entries accepted, as long as there's space. Fee structure:

Instinct \$21 Pre-entry / \$26 Late Entry / \$26 Day of Trial

Novice, Open \$26 Pre-entry / \$31 Late Entry / \$31 Day of Trial

Senior, Master, Crazy 8's \$31 Pre-entry / \$36 Late Entry / \$36 Day of Trial

Mailed in entries: Add an additional \$2.00 per a run for processing

**DAY OF TRIAL:** "Day of" registration ends 15 min prior to the start of your class. Please come early! The running order will be posted near ringside. All requests for running order changes must be approved by the Trial Secretary. Running order:

Trials will be in this order on Friday: (Ring 1) Cz8, Cz8, Master. Registration opens at 3:00pm, and Cz8 begins at 4:00pm.

Trials will be in this order on Saturday: (Ring 1) Master, Master, Senior, Senior, (Ring 2) Open, Open, Instinct, Novice, Novice. Registration opens at 7:00am. Masters begins at 8:00AM.

Trials will be in this order on Sunday: (Ring 2) Instinct, Novice, Novice, Open, Open, (Ring 1) Senior, Senior, Master, Master. Registration opens at 7:00am. Instinct begins at 8:00AM.

Rings are covered outdoors on a gravel, dirt, and straw surface.

Judges are limited to 8 hours of judging and a maximum run value, which will require this club to limit entries accordingly. Late and/or Day of Show entries are not a guaranteed entry and will be accepted only up to judging limits. Confirmations will not be sent for Late entries.

Ribbons: Flat ribbons awarded for Qualifying scores in all classes; Rosettes awarded for new titles in Novice, Open, Senior, Master, RATCH, RATCHX, REMX, and Crazy 8's.

## **VOLUNTEERS**

We can't run a trial without you. Sin City Super Sniffers has sponsored some amazing VOLUNTEER ONLY raffles to show our appreciation! You can let us know if you'd like to volunteer beforehand by contacting us or signing up on our FaceBook Trial page or sign up at the registration table on the day of trial.

## GENERAL GUIDELINES

- Please review all BHA established competitor rules:  
[https://www.barnhunt.com/rules/barnhunt\\_competitorrules\\_2025.pdf](https://www.barnhunt.com/rules/barnhunt_competitorrules_2025.pdf)
- About the property:
  - Car crating is recommended.
  - The trial location will be open from 3pm-10pm on Friday, and 7:00am-6pm on Saturday and Sunday. Trial location is a private property, and is handicapped and wheelchair-accessible.
  - The blind will be 10'x20' set up along the garden wall on the parking side. The blind will be outdoors, covered, open-sided. Max 6 dogs per blind for Instinct, Novice and Open, 5 for Senior and Crazy 8's, and 4 for Master.
  - Avoid disturbing the neighbors. Be mindful of barking.
  - Potty your dog in the designated potty areas, and pick up after your dog.
  - All dogs must be on the leash at all times except when in the ring; NO FLEXI LEADS allowed on the property.
- About the trial:
  - All participants should check in with the secretary upon arrival.
  - General Briefing will be held right before the start of the trial. The judge may optionally give a briefing before a class.
  - Exhibitors are responsible for being in the staging area when it is their turn to run or risk losing their turn to run.
  - Bitches in Season ("BIS") will run at the end of the class. BIS must wear panties; notify the Secretary prior to the trials, so we can provide you with a separate area to crate and to potty, and to arrange for separate blinds. Identify yourself to the Chair, Secretary, and the Judge at General Briefing.
  - We reserve the right to change running orders as needed to keep the trial running smoothly.
  - Dogs must be eligible to run a class at the time of entry. Dogs who complete a title at a trial may move up, down or laterally, at the discretion of the handler, in the next trial. Please make move-up requests at the secretary's table. Handlers are responsible for making the request in time for the move-up to be processed.
  - This event is open to all dogs 6 months of age and older.
- Refunds:
  - No refunds will be made for cancellations or entries which are absent, disqualified, excused, or barred from competition by decision of the Trial Committee.

- If you need to withdraw your dog due to a contagious illness, or withdraw your BIS after November 20, contact the Secretary to be issued a voucher for a future trial.
- No entry fee will be refunded if the event cannot open or be completed by reason of riots, civil disturbances, fire, Act of God, public emergency, act of a public enemy, extreme weather conditions, or any other cause beyond the control of the event committee.
- Exhibitors should follow their veterinarians' recommendation to assure their dogs are free of internal and external parasites, any communicable diseases, and have appropriate vaccinations. You may not run a dog that is sick, lame, injured or blind.
- No dog to dog interaction; assume that every dog needs space.
- No dog to dog aggression or dog to human aggression will be allowed; this will be cause for exclusion from the event and forfeit of entry fees.
- Please keep your dog at least 10 feet from the ring and the blind, unless entering or exiting either the ring or blind, and do not block pathways between the two. Dogs are excited to be heading to the ring to start hunting; avoid unnecessary confrontations.
- It is expressly understood that exhibitors alone are responsible for behavior of their dogs, children and/or guests. Any exhibitor whose dogs, children and/or guests that repeatedly engages in unsafe or disruptive behavior may, at the discretion of the Trial Committee, be asked to leave the trial site. In such cases, no refund on any entry will be made.
- No alcoholic beverages or smoking / vaping are allowed at the event site.
- No professional or flash photography except by the event photographer.
- Good sportsmanship and humane treatment of dogs, always!

**AROUND THE VENUE:** Lunch will be served. Details to be sent with entry confirmations.

Just a few of the pet-friendly lodging options nearby:

- Motel 6 Las Vegas I-15. 5085 Dean Martin Dr, Las Vegas, NV 89118 (702-739-6747)
- Days Inn by Wyndham. 3330 W Tropicana Ave, Las Vegas, NV 89103 (702-623-0179)
- Travelodge, La Quinta Inn, Best Western all close by that are also pet friendly. I would recommend staying WEST of the Strip.

Medical Centers nearby:

- UMC Trauma Center. 800 Hope Pl, Las Vegas, NV 89106. Open 24 hours. +1(702)383-2000
- CareNow Urgent Care - Charleston & Decatur, 4575 W Charleston Blvd, Las Vegas, NV 89102. Open 8am-8pm. +1(702)877-8777

Emergency Veterinarian: [Veterinary Emergency Group](#). 800 S Rampart Blvd Suite 110, Las Vegas, NV 89145. Open 24 hours. +1(702) 790-8242

## DIRECTIONS TO THE VENUE: (1200 Ralson Dr., Las Vegas, NV 89106)

### From Utah

On entering Las Vegas, follow I-15 South to W Washington Ave (Exit 44). Continue on Washington, make a right at Comstock Dr, a right at Ophir Dr, and a left on Ralston Dr. The destination will be on the RIGHT.

### From Arizona

Take US-93 North, and continue onto I-11. Merge onto I-515 North/95 North. Take Exit 76C for N. MLK Blvd. Continue on MLK Blvd, and turn left onto W Washington Ave. Make a right at Comstock Dr, a right at Ophir Dr, and a left on Ralston Dr. The destination will be on the RIGHT.

### From California

Take I-15 North to MLK Blvd (Exit 42A). Continue on MLK Blvd, and turn left onto W Washington Ave. Make a right at Comstock Dr, a right at Ophir Dr, and a left on Ralston Dr. The destination will be on the RIGHT.

### From Reno

Take US-95 South and then follow signs to merge onto I-95 Business Route (towards Ann Rd). Turn left onto W Washington Ave, right at Comstock Dr, right at Ophir Dr, and left on Ralston Dr. The destination will be on the RIGHT.

